

Notes

1. ALL SITE STAFF, SUB-CONTRACTORS, SUPPLIERS OR ANY OTHER PERSON WHO HAS REASON TO REFER TO THIS DRAWING FOR REASON OF SUPPLY, CONSTRUCTION OR PRICING MUST TAKE INTO ACCOUNT THE CONSTRUCTION (DESIGN & MANAGEMENT) REGULATIONS AND IF ANY MATERIAL OR IMPLICATION REFERRED TO ON THIS DRAWING IS CONTRARY TO THESE REGULATIONS WATKIN JONES MUST BE ADVISED IMMEDIATELY.
2. ALL DIMENSIONS IN MILLIMETRES
3. ALL DIMENSIONS TO BE CHECKED ON SITE PRIOR TO COMMENCEMENT OF WORK OR ORDERING ITEMS/MATERIALS
4. THIS DRAWING IS COPYRIGHT & IS NOT TO BE ALTERED, REPRODUCED OR USED IN ANY OTHER WAY OR FORM WITHOUT THE WRITTEN CONSENT OF THE WATKIN JONES GROUP

ALL NEW INTERNAL 215mm BLOCKWORK PARTY WALLS TO BE 100mm SOLID BLOCKS LAID FLAT, WITH A DENSITY OF 1840kg/m³. WET PLASTER FINISH TO BOTH SIDES. MIN. MASS OF PLASTER TO BE 10kg/m² PER UNIT AREA.

NEW EXTERNAL WALLS TO CONSIST OF INNER LEAF 140mm BLOCK WALL TO ENGINEERS DESIGN 45mm KINGSPAN TW50 50mm CLEAR CAVITY 102mm FACING BRICK FOR WALL TIES SEE ENGINEERS DETAILS

FD30SVP HALF HOUR FIRE RESISTANT DOOR WITH INTUMESCENT STRIP, COLD SMOKE SEAL, VISION PANEL AND SELF CLOSING DEVICE.

FD30S HALF HOUR FIRE RESISTANT DOOR WITH INTUMESCENT STRIP, COLD SMOKE SEAL AND SELF CLOSING DEVICE.

HO HOLD OPEN DEVICE LINKED TO FIRE ALARM.

aov AUTOMATIC OPENING VENT 1.5m² FREE AREA LINKED TO FIRE ALARM.

FOR CONSTRUCTION

flats 145 & 146 amended	11/01/07	T
rooftlights amended to mansard flat 146 amended	02/01/07	S
Lift roof added, external wall to flat 145 amended to timber frame	30/10/06	R
Means of escape amended	05/10/06	P
Wall size to East side of Stair 3 increased to 215mm Block	SC 15/09/06	O
Internal 130mm stud partitions increase to 138mm wide	SC 13/09/06	N
Amendments made to internal layouts	SC 31/08/06	M
Amendments made to internal layouts including SVP rationalization	SC 22/08/06	L
Amendments made to internal layouts including NW lift shaft position	SC 28/07/06	K
Amendments made to external lift core	SC 21/07/06	J
215mm block walls introduced as per Capita Symonds instructions, amendements made to partition positioning, furniture, sanitaryware and SVPs	SC 30/06/06	H
1.2m wide beds introduced (shaded for clarification) stair annotation and cross sectional lines added, room layouts in the NW corner changed to reduced number of SVPs	SC 19/06/06	G
Furniture and room layouts changed	SC 15/06/06	F
Dry riser moved, inlet box indicated and distance reduced to 18m	SC 18/05/06	E
Kitchen area amended, dry riser added	16/05/06	D
Additional AOV, OV and natural ventilation added. Internal partition sizes standardised, door sizes standardised, bed lengths corrected, new room layouts including additional dividing partitions for increased privacy	SLC 30/01/06	C
Introduction of fire doors in corridor, AOV, alterations to layouts to facilitate Part B requirements	SLC 11/01/06	B
existing stair to moland street amended	11/21/05	A

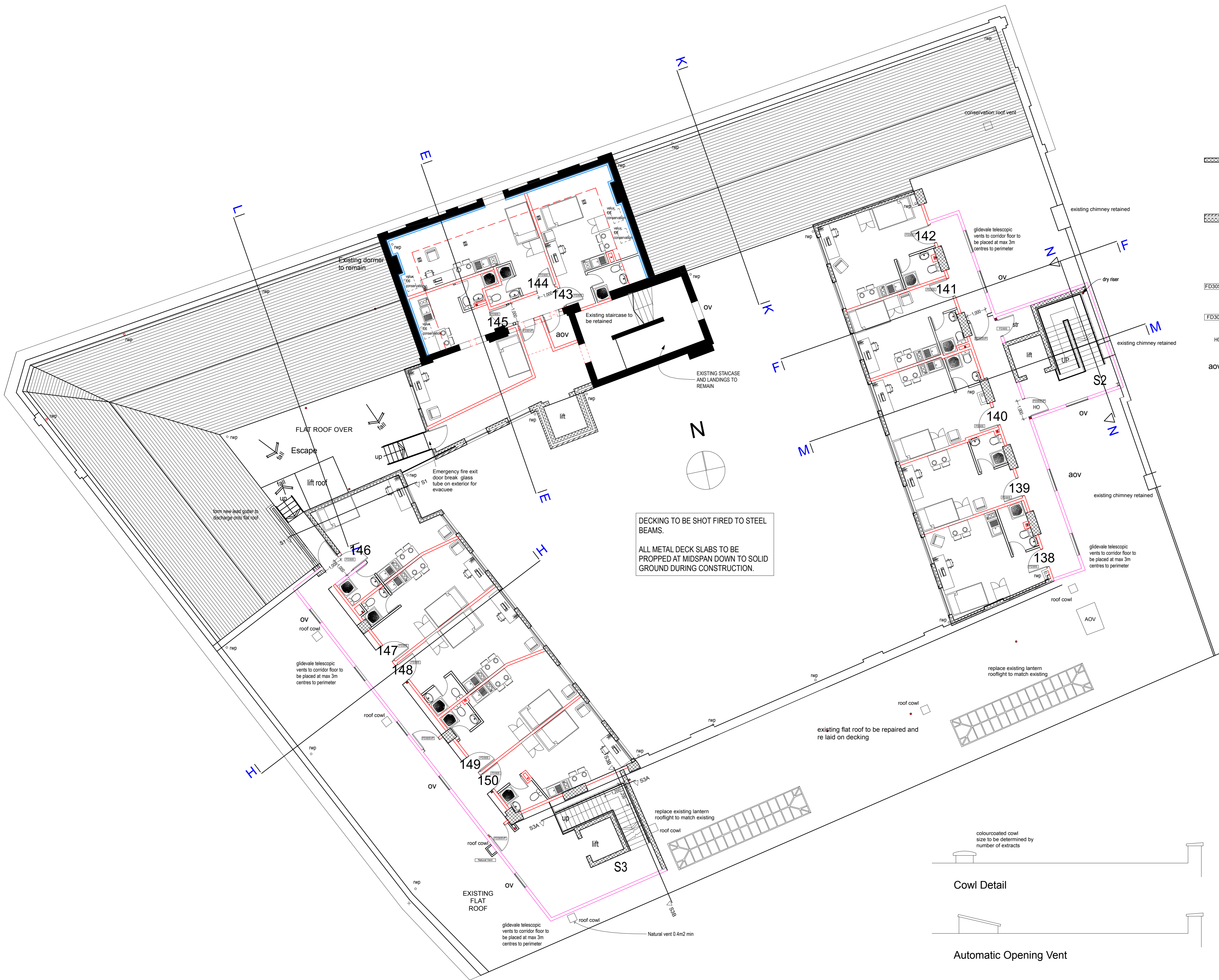
Revision	By	Date	NO
----------	----	------	----

Contract:
**Esterbrook Penworks, Moland St.,
 Newhall, Birmingham.**

Title:
Proposed Fourth Floor Plan

WATKIN JONES
 CONSTRUCTION
 Liondegall Industrial Estate
 Bangor Gwynedd
 LL57 4YH
 Tel. (01248) 362516
 Fax. (01248) 352860

Scale	Date	Drawn	Checked	Drawing No.	Rev.
1 / 100	Jan. 06	SLC		3415/13	T



DECKING TO BE SHOT FIRED TO STEEL BEAMS.
 ALL METAL DECK SLABS TO BE PROPPED AT MIDSPAN DOWN TO SOLID GROUND DURING CONSTRUCTION.

